

'88 AUG 12 PM 12 46

CERTIFIED LAND CORNER RECORDATION

DESCRIPTION OF CORNER EVIDENCE FOUND, AND ORIGINAL RECORD (If known)

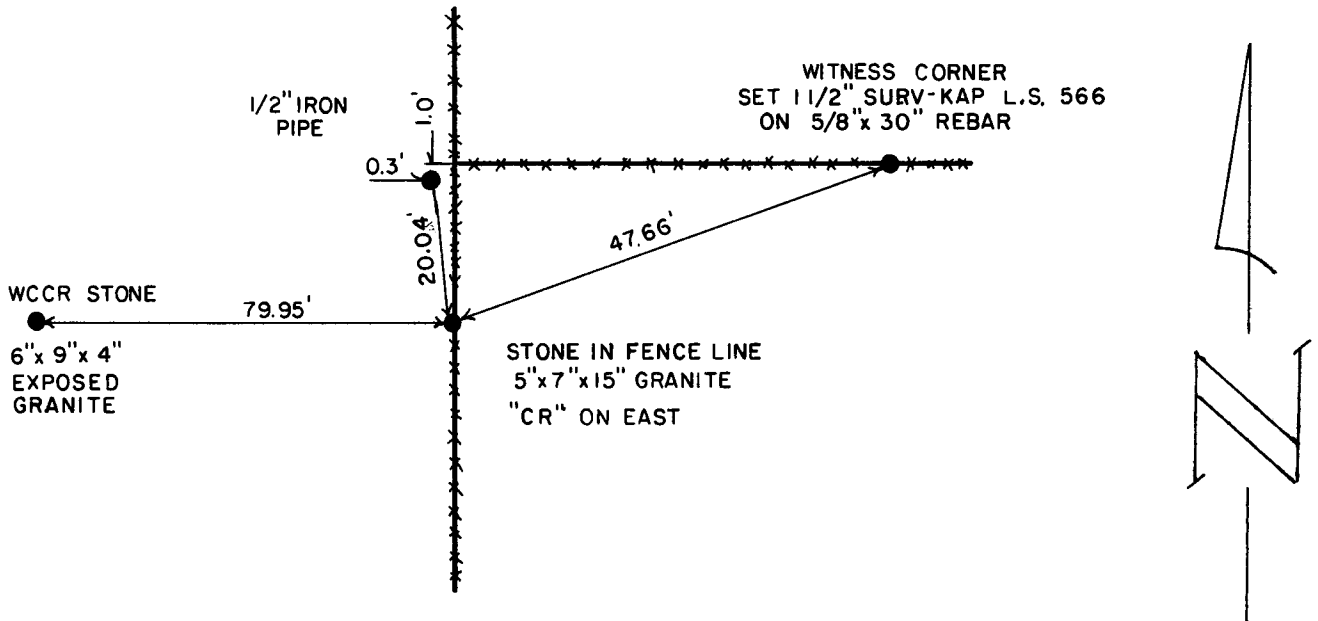
9 | 10

T. 14 N., R. 66 W., 6th P.M., Laramie County, Wyoming. Found stone and W. C. C. R. stone.

DESCRIPTION OF MONUMENT AND ACCESSORIES ESTABLISHED TO PERPETUATE THE ORIGINAL LOCATION OF THIS CORNER:

Set 5/8" x 30" rebar with surv-kap LS 566 as reference, and referenced stone to W. C. C. R. stone and 1/2" pipe.

SKETCH, WITH COURSE AND DISTANCE TO ADJACENT CORNER IF DETERMINED IN THIS SURVEY.
(May Sketch or Paste Reproduction on Reverse Side.)



I, WILLIAM D. BRAMAN certify that I have carefully performed or reviewed the work done on the diagrammed corner as reported on this recordation form and approve the same.

William D. Braman
Signature of Surveyor

PLS 566
Registration No.

STATE OF WYOMING,
Office of Clerk and Recorder,
County of Laramie

This "corner record" was filed for record on the 12th day of August, 1988, was noted on the cross-index plat and is assigned page No. _____, in book No. _____.

Janet C. Whitehead
County Official

Cross Index No. <u>G-13</u>	T. <u>14 N.</u>	R. <u>66 W.</u>	Mer.
_____	T. _____	R. _____	Mer.
_____	T. _____	R. _____	Mer.
_____	T. _____	R. _____	Mer.
_____	T. _____	R. _____	Mer.
_____	T. _____	R. _____	Mer.
_____	T. _____	R. _____	Mer.